



WARN® Tabor 10K Winch

Big on Power and Big on Value

For those looking for more pulling power without having to break the bank, there's the WARN Tabor 10K. With a 10,000 lb. capacity, this winch is ideal for heavier trucks, SUVs, and Jeeps. Big power, big torque, not-so-big price.

- Legendary WARN reliability and performance; 10,000 lb. (4536 kg) capacity
- Low-profile design will fit most trucks and SUVs
- Separate control pack for various mounting options
- Exclusive brake design for superior winching control
- Durable, smooth, and reliable three-stage planetary geartrain
- Series-wound motor for power and fast line speed
- Remote control with 12' (3.7m) lead
- 80' of 3/8" (24m of 9.5mm) diameter wire rope



www.electricwinchshop.com.au



SPECIFICATIONS

Winch model: Tabor 10K

Part number: PN 88395 (12V)

Rated line pull: 10,000 lbs., (4536 kgs.) single-line

Motor: 12V DC Series Wound

Electrical controls: Solenoid

Remote Control: Remote switch, 12' (3.7m) lead

Geartrain: 3-Stage Planetary

Gear ratio: 261:1

Clutch (freespooling): Sliding Ring Gear

Brake: Automatic Direct Drive Cone

Drum diameter/Length: 2.5"/9.0" (6.4cm/23cm)

Weight: 89 lbs. (40.4 kg)

Wire Rope: 80', 3/8" diameter (24m, 9.5mm diam.)

Fairlead: Roller

Recommended Battery: 650 CCA minimum for winching

Battery leads: 2 gauge, 72" (1.83m)

Finish: Powder coat

12V DC performance specs (first layer of drum)

Line Pull Lbs. (Kg)	Line Speed Ft./min. (M/min.)	Motor Current	Pull by layer: layer/Lbs (Kg)
0	25.9 (7.8)	66 amps	1/10000 (4536)
2000 (910)	13.0 (3.9)	160 amps	2/8000 (3629)
4000 (1810)	9.6 (2.9)	247 amps	3/7280 (3302)
6000 (2720)	7.1 (2.1)	332 amps	4/6670 (3026)
8000 (3630)	5.0 (1.5)	417 amps	5/6230 (2826)
10000 (4536)	2.3 (0.7)	502 amps	

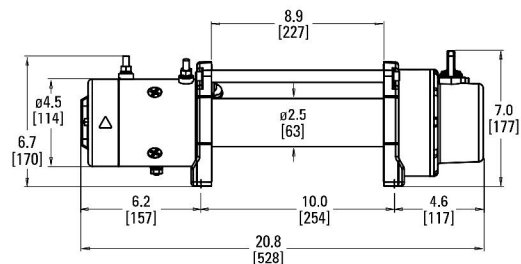
Mounting bolt pattern:

10.0" x 4.5" (254mm x 114.3mm)



Winch dimensions:

20.8" L. x 6.3" D. x 6.97" H.
(528mm L. x 160mm D. x 177mm H.)



Warn Industries, Inc.
12900 S.E. Capps Road,
Clackamas, OR USA 97015-8903



International Sales Support:
+1 503 722 1200
www.warn.com